

COOPER TEXAS REAL ESTATE HOLDINGS, LLC, 174.77 ACRES VOL. 393, PG. 478 O.P.R.E.C.T.

R.E. MENOTTI 152.00 ACRES VOL. 282, PG. 261 O.P.R.E.C.T.

R.E. MENOTTI 84.40 ACRES VOL. 314, PG. 371 O.P.R.E.C.T.

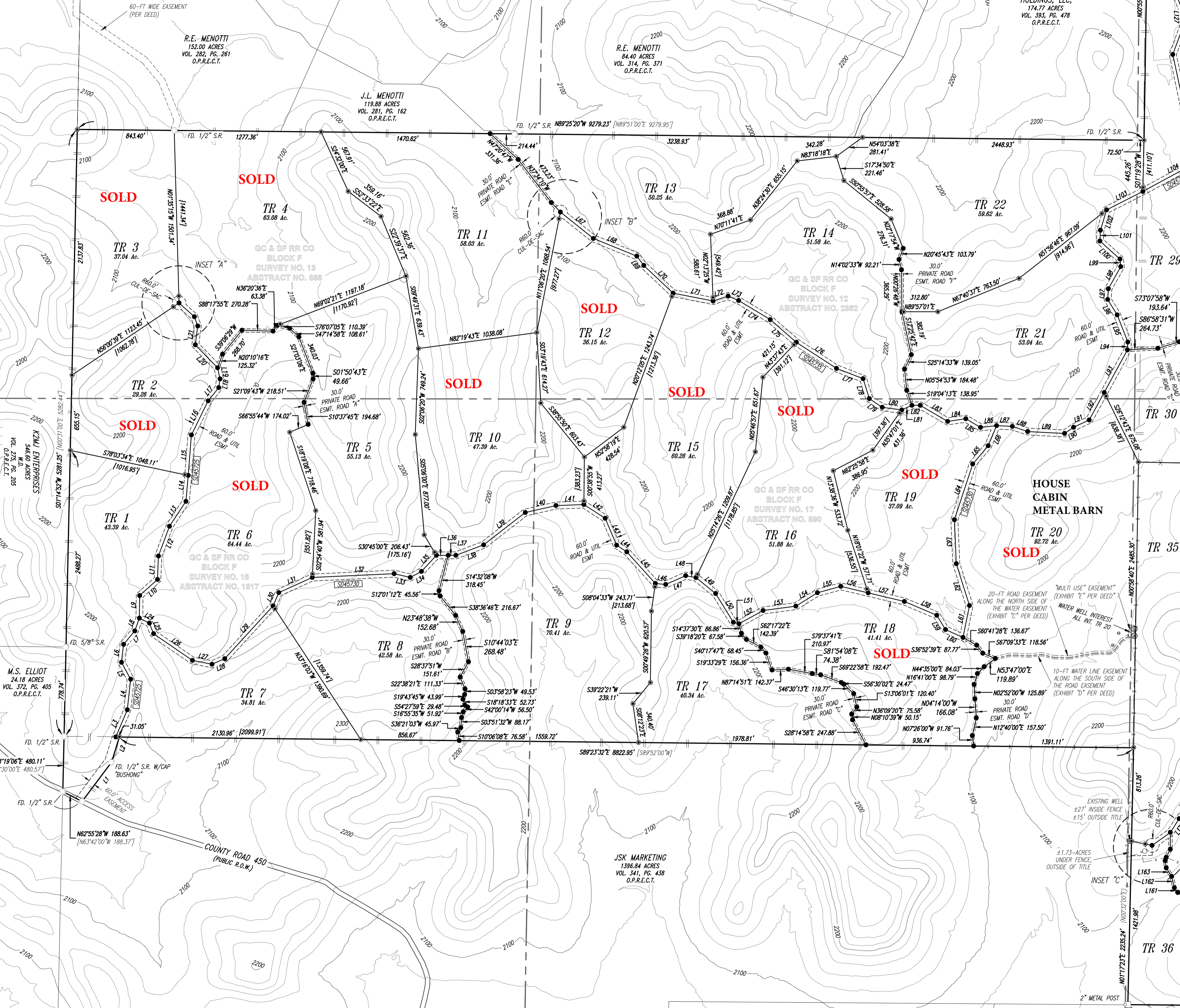
J.L. MENOTTI 119.88 ACRES VOL. 281, PG. 162 O.P.R.E.C.T.

K2M ENTERPRISES 546.60 ACRES VOL. 275, PG. 205 O.P.R.E.C.T.

M.S. ELLIOT 24.18 ACRES VOL. 372, PG. 405 O.P.R.E.C.T.

JSK MARKETING 1396.84 ACRES VOL. 341, PG. 438 O.P.R.E.C.T.

HOUSE CABIN METAL BARN



SOLD

SOLD

SOLD

SOLD

SOLD

SOLD

SOLD

SOLD

SOLD

TR 3
37.04 Ac.

TR 4
63.08 Ac.

TR 11
58.03 Ac.

TR 13
50.25 Ac.

TR 14
51.58 Ac.

TR 22
58.62 Ac.

TR 2
29.26 Ac.

TR 5
55.13 Ac.

TR 10
47.39 Ac.

TR 15
60.28 Ac.

TR 19
37.09 Ac.

TR 1
43.39 Ac.

TR 6
64.44 Ac.

TR 8
42.58 Ac.

TR 9
70.41 Ac.

TR 17
40.34 Ac.

TR 18
41.41 Ac.

TR 20
92.72 Ac.

TR 7
34.81 Ac.

TR 36

GC & SF RR CO BLOCK F SURVEY NO. 13 ABSTRACT NO. 888

GC & SF RR CO BLOCK F SURVEY NO. 12 ABSTRACT NO. 2352

GC & SF RR CO BLOCK F SURVEY NO. 16 ABSTRACT NO. 1817

GC & SF RR CO BLOCK F SURVEY NO. 17 ABSTRACT NO. 890

COUNTY ROAD 450 (PUBLIC R.O.W.)

20-FT ROAD EASEMENT ALONG THE NORTH SIDE OF THE WATER EASEMENT (EXHIBIT "C" PER DEED)

10-FT WATER LINE EASEMENT ALONG THE SOUTH SIDE OF THE ROAD EASEMENT (EXHIBIT "D" PER DEED)

EXISTING WELL ±27' INSIDE FENCE ±15' OUTSIDE TITLE

±1.73-ACRES UNDER FENCE, OUTSIDE OF TITLE

INSET "C"

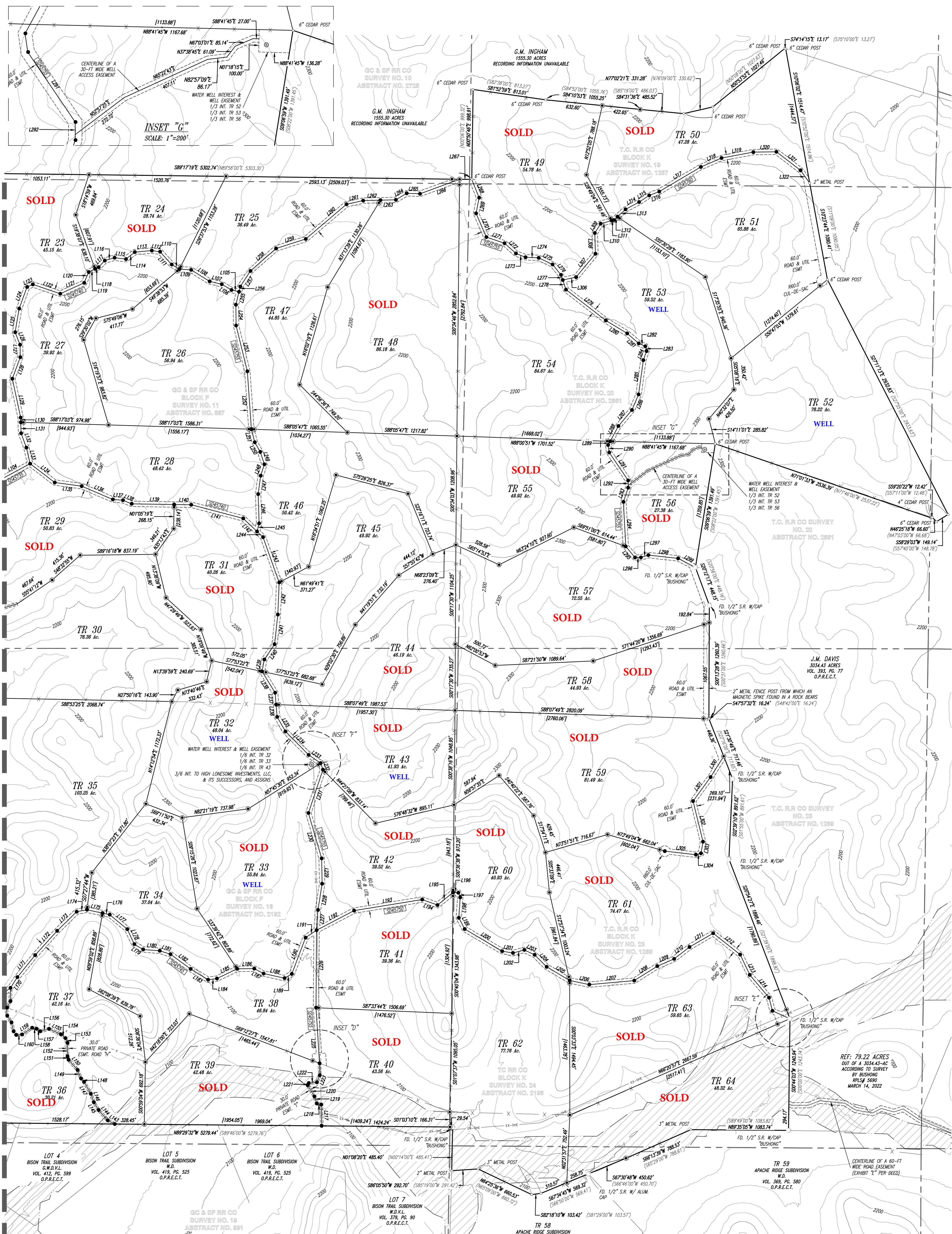
2" METAL POST

±1.73-ACRES UNDER FENCE, OUTSIDE OF TITLE

EXISTING WELL ±27' INSIDE FENCE ±15' OUTSIDE TITLE

±1.73-ACRES UNDER FENCE, OUTSIDE OF TITLE

2" METAL POST



INSET "G"
SCALE: 1"=200'

GC & SF RR CO
BLOCK F
SURVEY NO. 11
ABSTRACT NO. 887

GC & SF RR CO
BLOCK K
SURVEY NO. 19
ABSTRACT NO. 1287

GC & SF RR CO
BLOCK F
SURVEY NO. 18
ABSTRACT NO. 2192

GC & SF RR CO
BLOCK K
SURVEY NO. 23
ABSTRACT NO. 1288

GC & SF RR CO
BLOCK K
SURVEY NO. 24
ABSTRACT NO. 2195

GC & SF RR CO
SURVEY NO. 18
ABSTRACT NO. 891

G.M. INGHAM
1555.30 ACRES
RECORDING INFORMATION UNAVAILABLE

T.C. R.R. CO
BLOCK K
SURVEY NO. 20
ABSTRACT NO. 2581

T.C. R.R. CO
SURVEY
NO. 20
ABSTRACT NO. 2581

T.C. R.R. CO
SURVEY
NO. 23
ABSTRACT NO. 1288

T.C. R.R. CO
BLOCK K
SURVEY NO. 23
ABSTRACT NO. 1288

T.C. R.R. CO
BLOCK K
SURVEY NO. 24
ABSTRACT NO. 2195

REF: 79.22 ACRES
OUT OF A 303.43-AC
ACCORDING TO SURVEY
BY BUSHONG
RPL# 5690
MARCH 14, 2022

LOT 4
BISON TRAIL SUBDIVISION
W.D.V.L.
VOL. 412, PG. 599
O.P.R.E.C.T.

LOT 5
BISON TRAIL SUBDIVISION
W.D.V.L.
VOL. 419, PG. 525
O.P.R.E.C.T.

LOT 6
BISON TRAIL SUBDIVISION
W.D.V.L.
VOL. 419, PG. 525
O.P.R.E.C.T.

LOT 7
BISON TRAIL SUBDIVISION
W.D.V.L.
VOL. 379, PG. 90
O.P.R.E.C.T.

TR 59
APACHE RIDGE SUBDIVISION
W.D.
VOL. 369, PG. 580
O.P.R.E.C.T.

CENTERLINE OF A 60-FT
WIDE ROAD EASEMENT
(EXHIBIT "E" PER DEED)